

Arguments en faveur d'une thrombolyse pré- hospitalière

Dr Bertrand GUIHARD - SAMU 974 - CHU de la
Réunion

But de la reperfusion coronaire

REPERMEABILISATION CORONAIRE



SAUVER DU MYOCARDE



LIMITATION DE LA TAILLE DE L'INFARCTUS



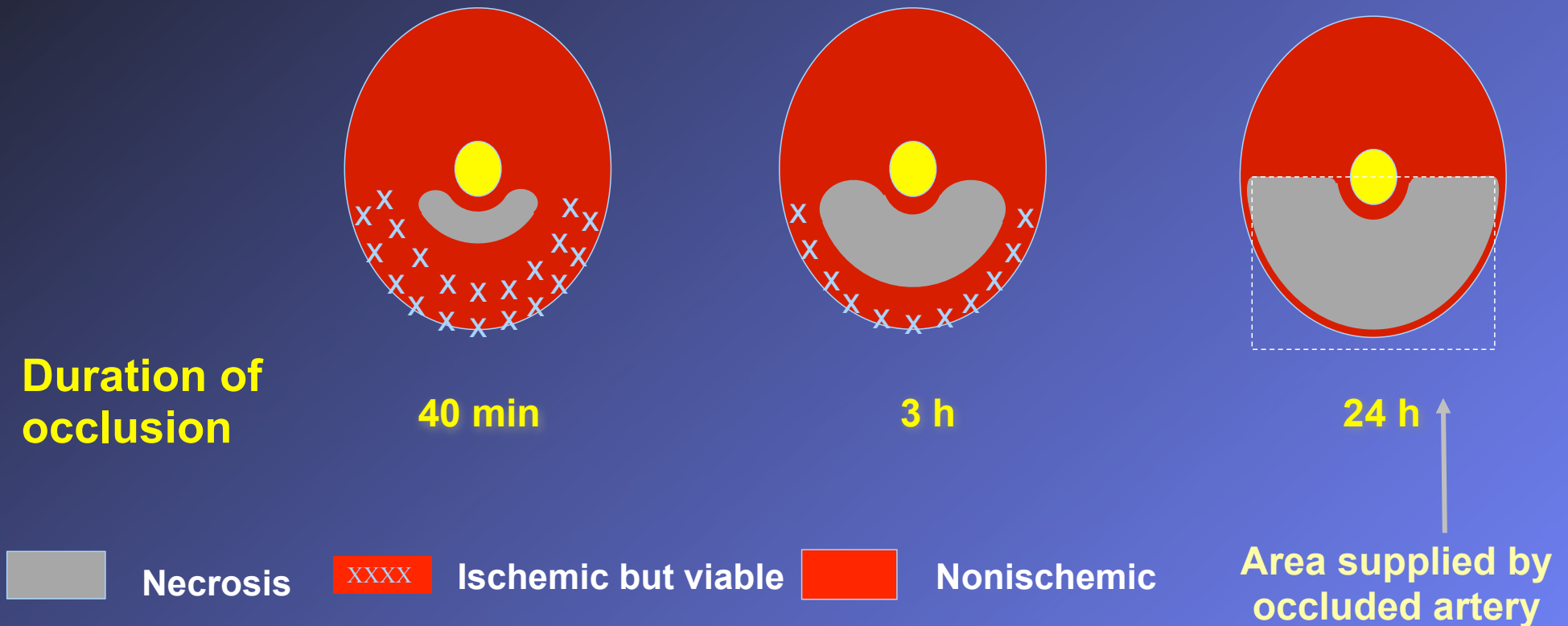
PRESERVER LA FEVG



DIMINUER LA MORTALITE

“Time is muscle”

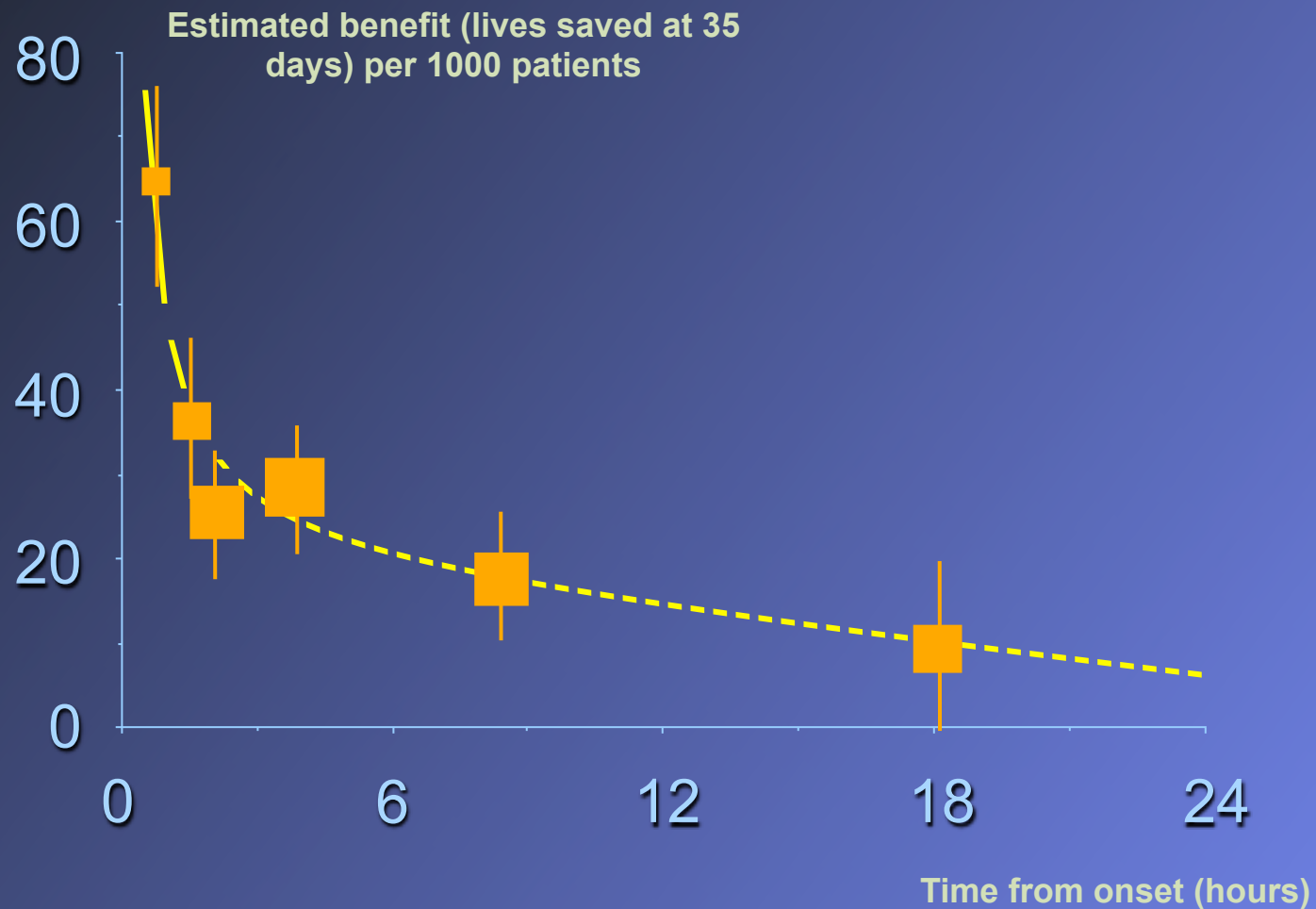
Cross-sections of left ventricle after experimental coronary artery occlusion



(Reimer KA, et al. *Circulation*. 1977;56:786-794).

Mortalité et délai «début de la douleur - traitement thrombolytique»

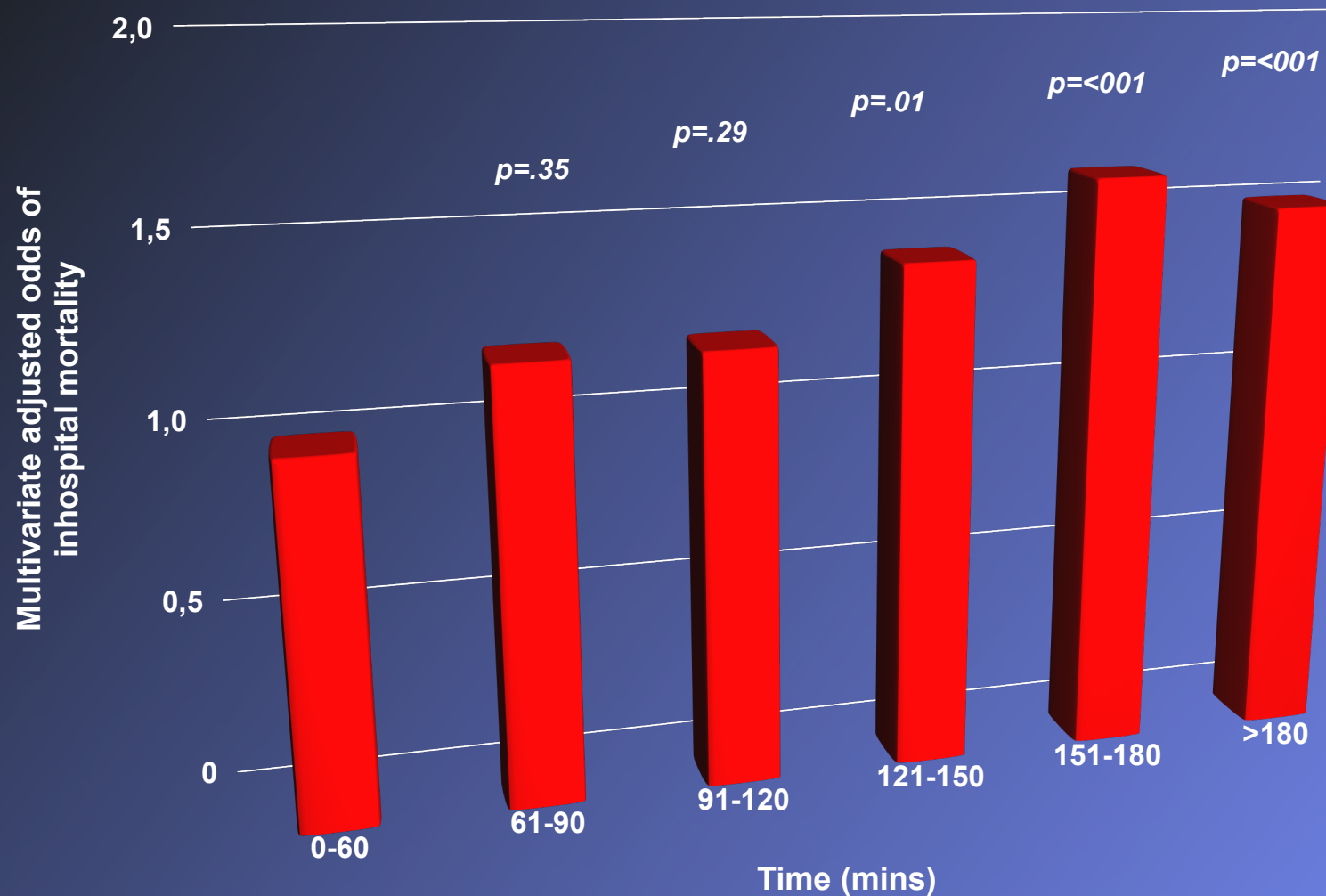
ERIC BOERSMA'S META-ANALYSIS (22 TRIALS from 83 to 93 - 50 246 PATIENTS)



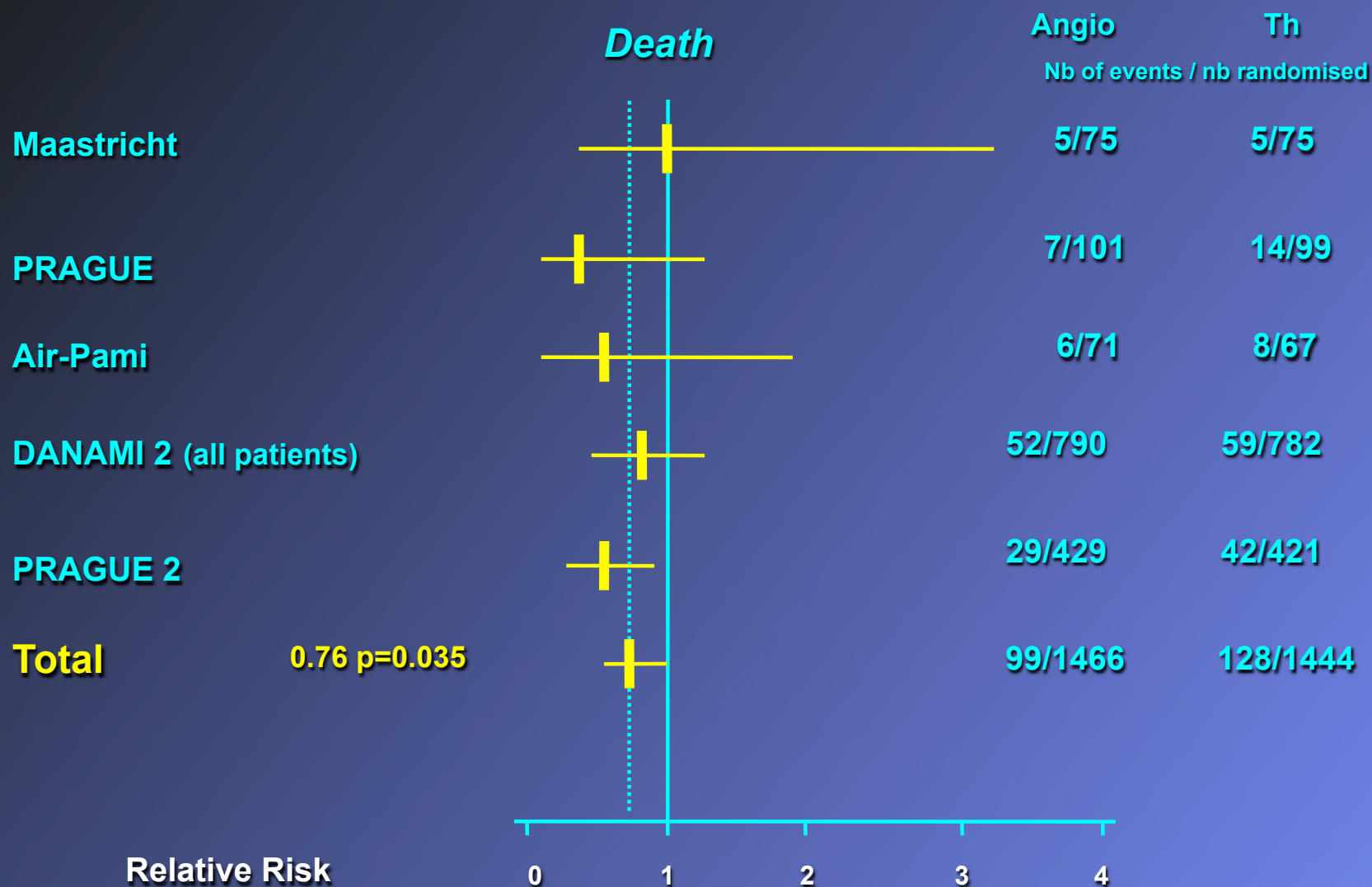
BOERSMA E et al

Early thrombolytic treatment in acute myocardial infarction : reappraisal of the golden hour - Lancet 1996 ; 771 - 775

Influence du délai «door to balloon» sur la mortalité



Angioplastie vs thrombolyse (arrivée à l'hôpital)



L'étude CAPTIM

SMUR



**ST segment ↗
onset of pain < 6 h
All received ASA + Heparin**



Central randomisation

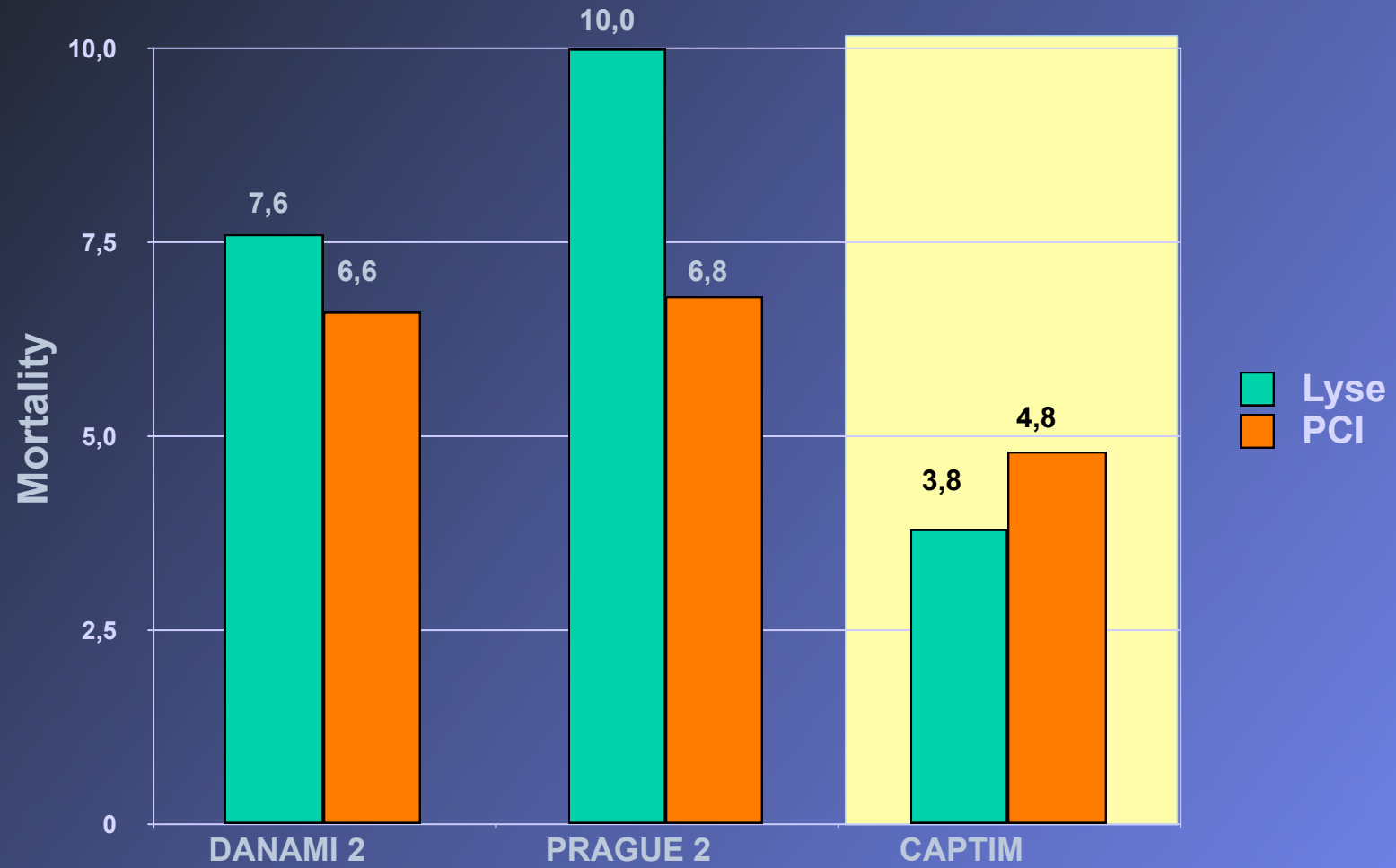


**In hospital
PCI**

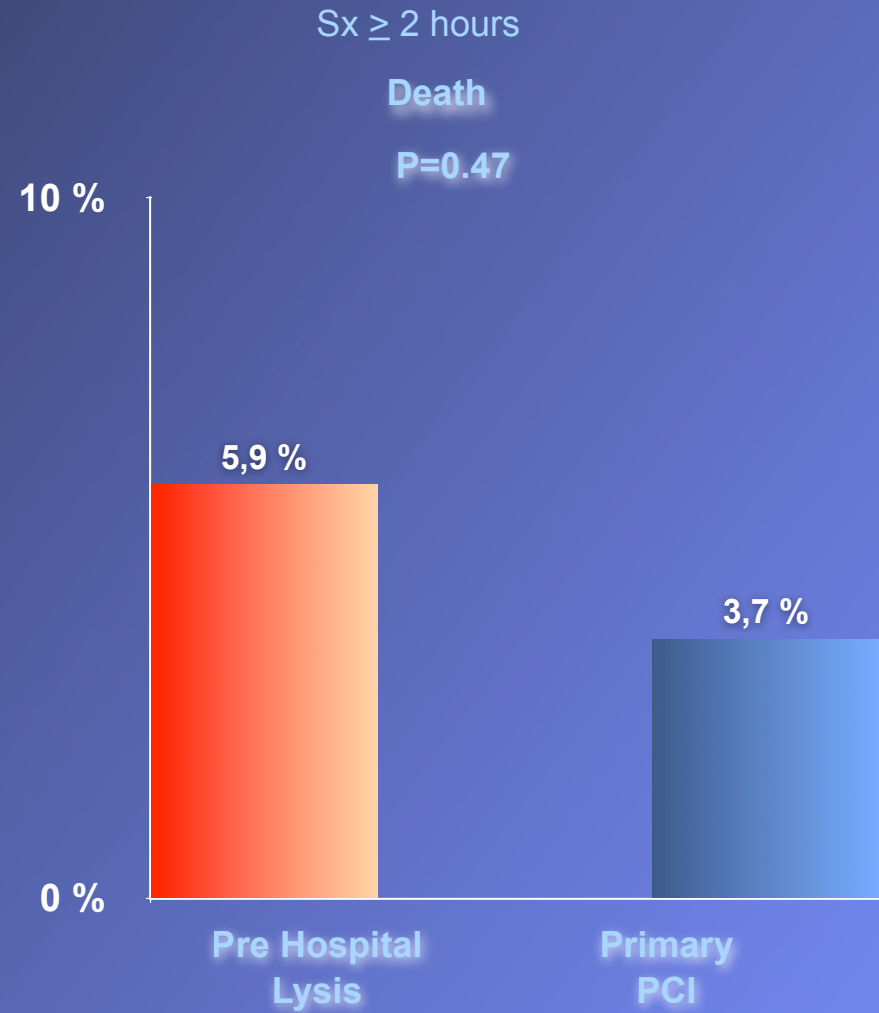
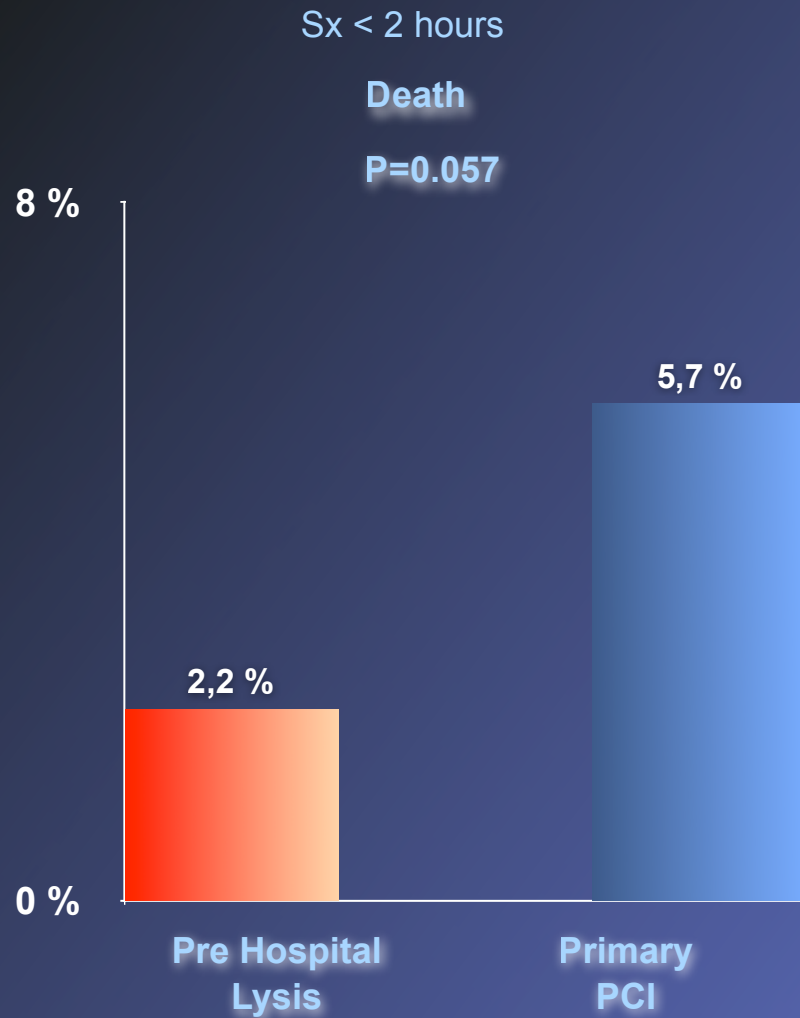


**Prehospital
thrombolysis**

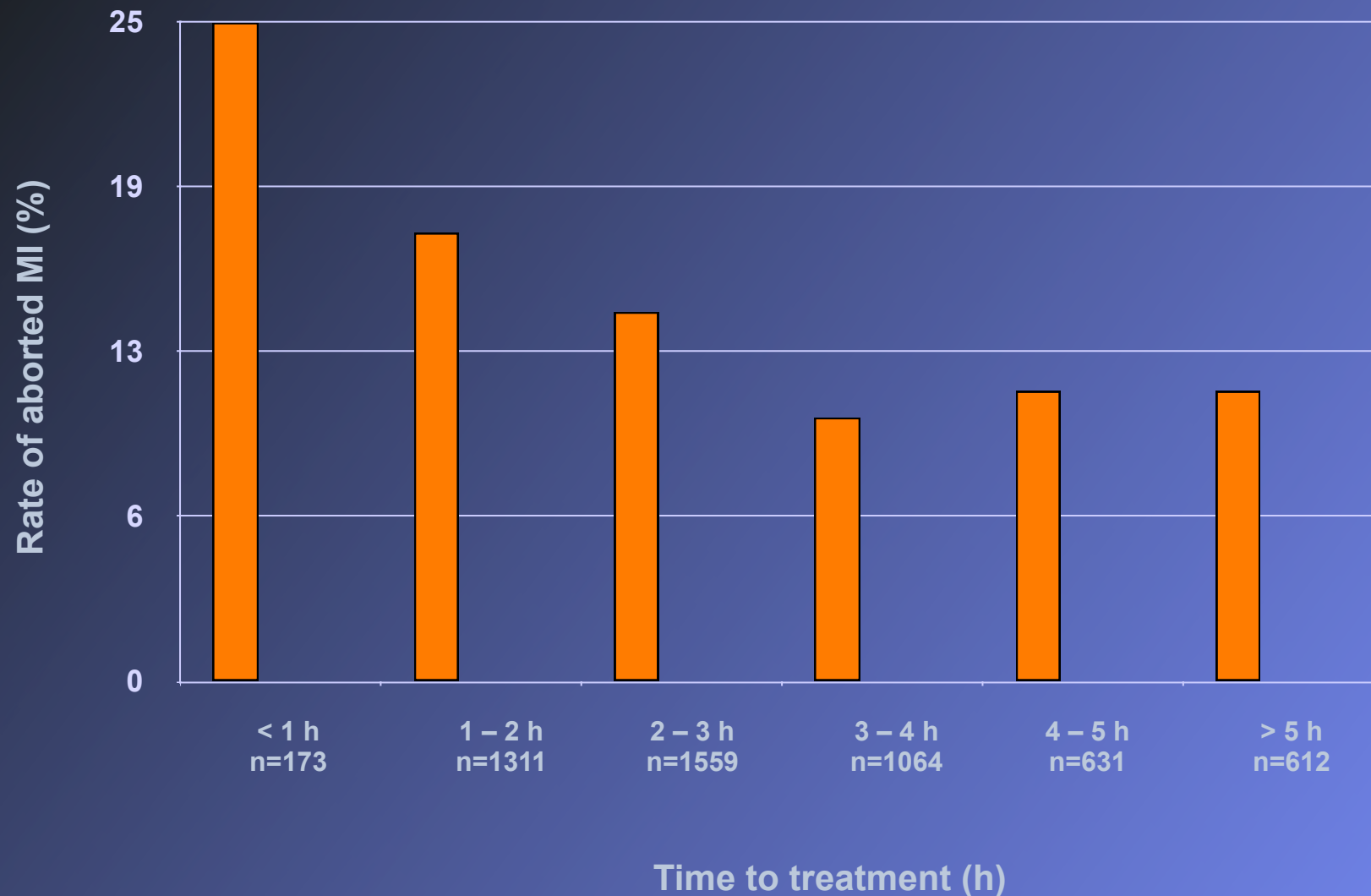
Résultats



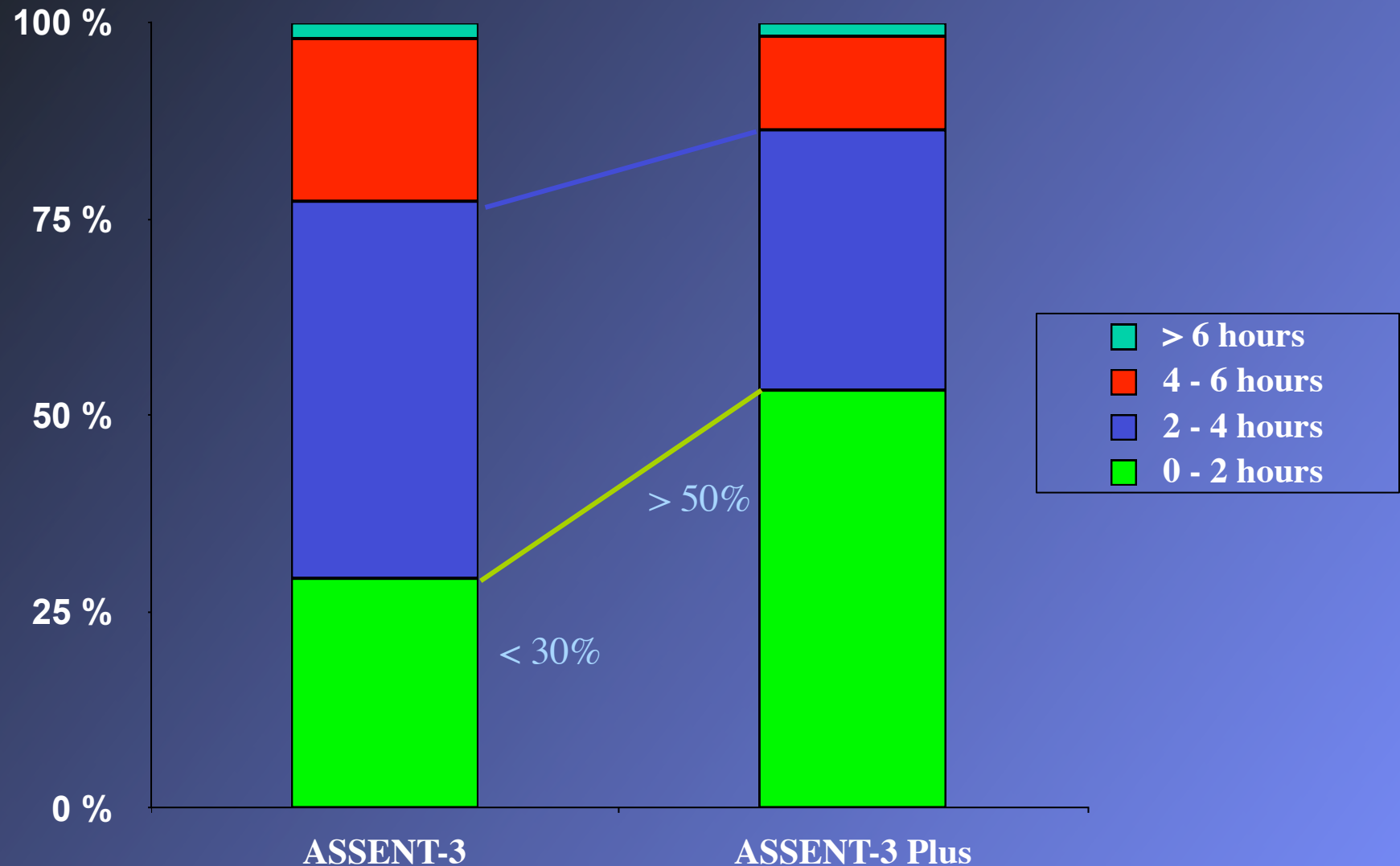
Résultats



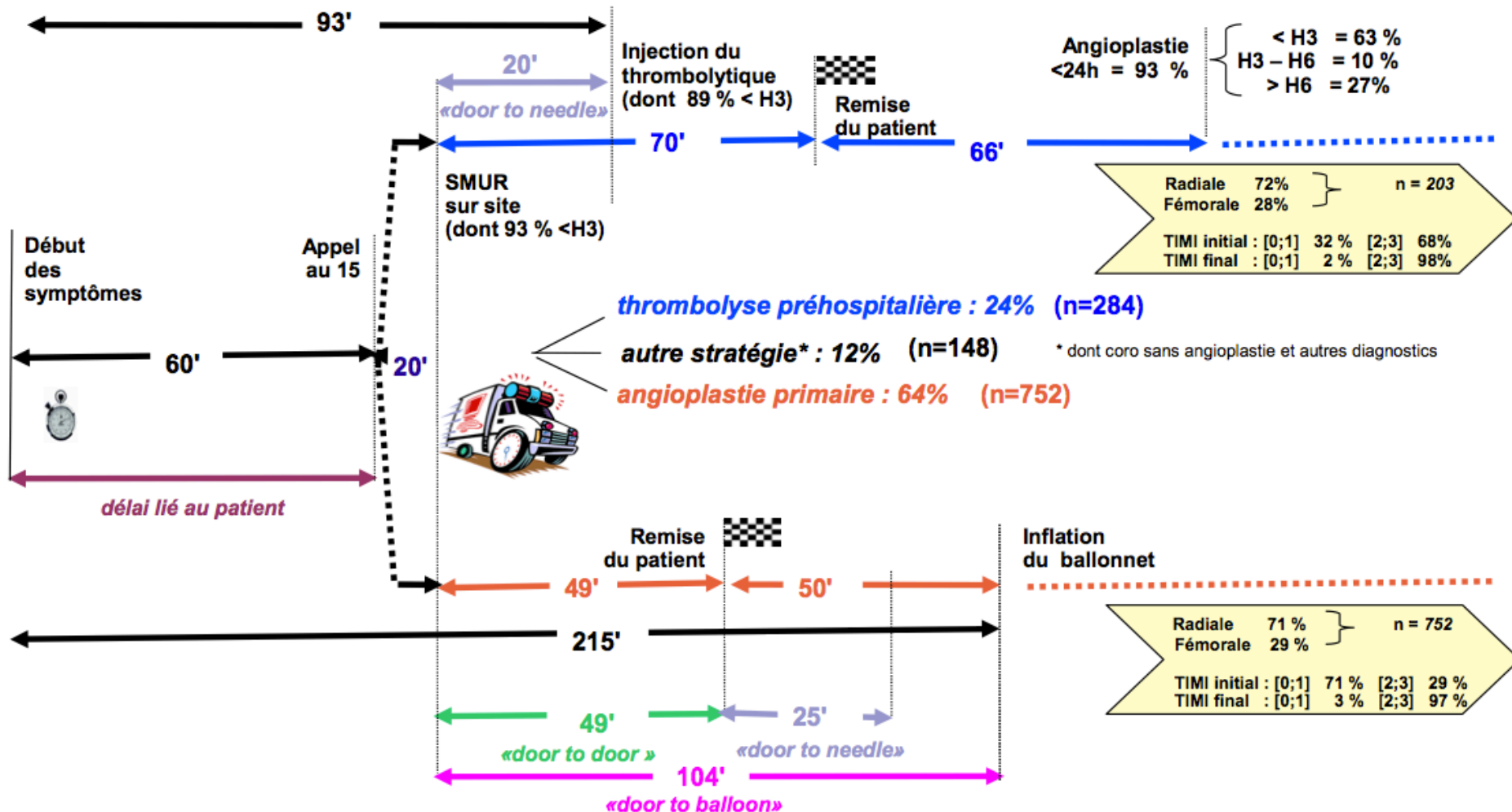
ASSENT 3+ : «IDM avortés» en fonction du délai symptôme - thrombolyse



Du symptôme à la thrombolyse : intérêt du SMUR



Les délais en pratique... (réseau RESCUE)



Angioplastie post thrombolyse ?

Circulation

JOURNAL OF THE AMERICAN HEART ASSOCIATION

American Heart
Association®



Learn and Live SM

Comparison of Thrombolysis Followed by Broad Use of Percutaneous Coronary Intervention With Primary Percutaneous Coronary Intervention for ST-Segment Elevation Acute Myocardial Infarction: Data From the French Registry on Acute ST-Elevation Myocardial Infarction (FAST-MI)

Nicolas Danchin, Pierre Coste, Jean Ferrières, Philippe-Gabriel Steg, Yves Cottin, Didier Blanchard, Loïc Belle, Bernard Ritz, Gilbert Kirkorian, Michael Angioi, Philippe Sans, Bernard Charbonnier, Hélène Eltchaninoff, Pascal Guéret, Khalife Khalife, Philippe Asseman, Jacques Puel, Patrick Goldstein, Jean-Pierre Cambou, Tabassome Simon and for the FAST-MI Investigators

Circulation 2008;118;268-276; originally published online Jun 30, 2008;

DOI: 10.1161/CIRCULATIONAHA.107.762765

Circulation is published by the American Heart Association, 7272 Greenville Avenue, Dallas, TX 72514

Copyright © 2008 American Heart Association. All rights reserved. Print ISSN: 0009-7322. Online ISSN: 1524-4539

Conclusions—When used early after the onset of symptoms, a pharmacoinvasive strategy that combines thrombolysis with a liberal use of PCI yields early and 1-year survival rates that are comparable to those of PPCI. (*Circulation*. 2008;118:268-276.)

La coopération avant tout...

